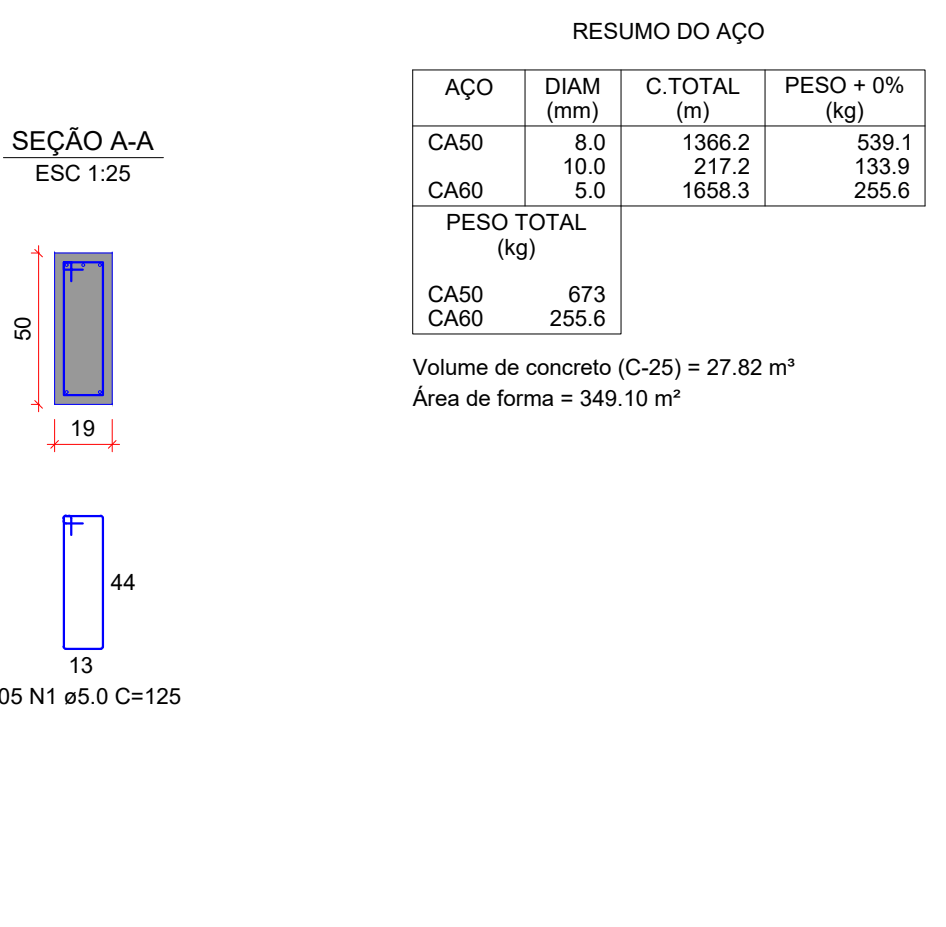
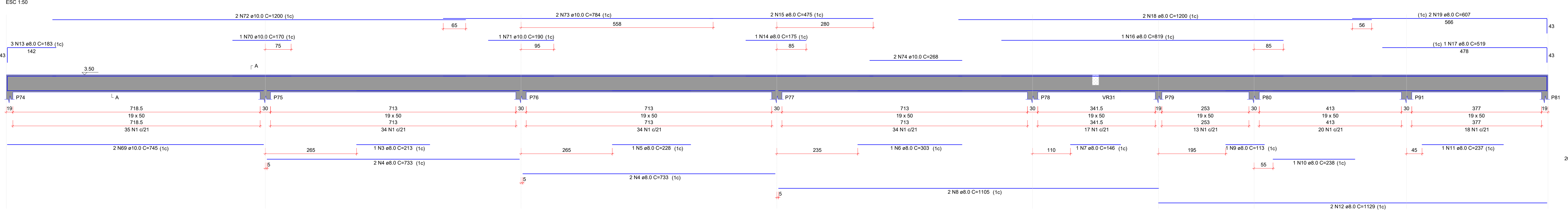
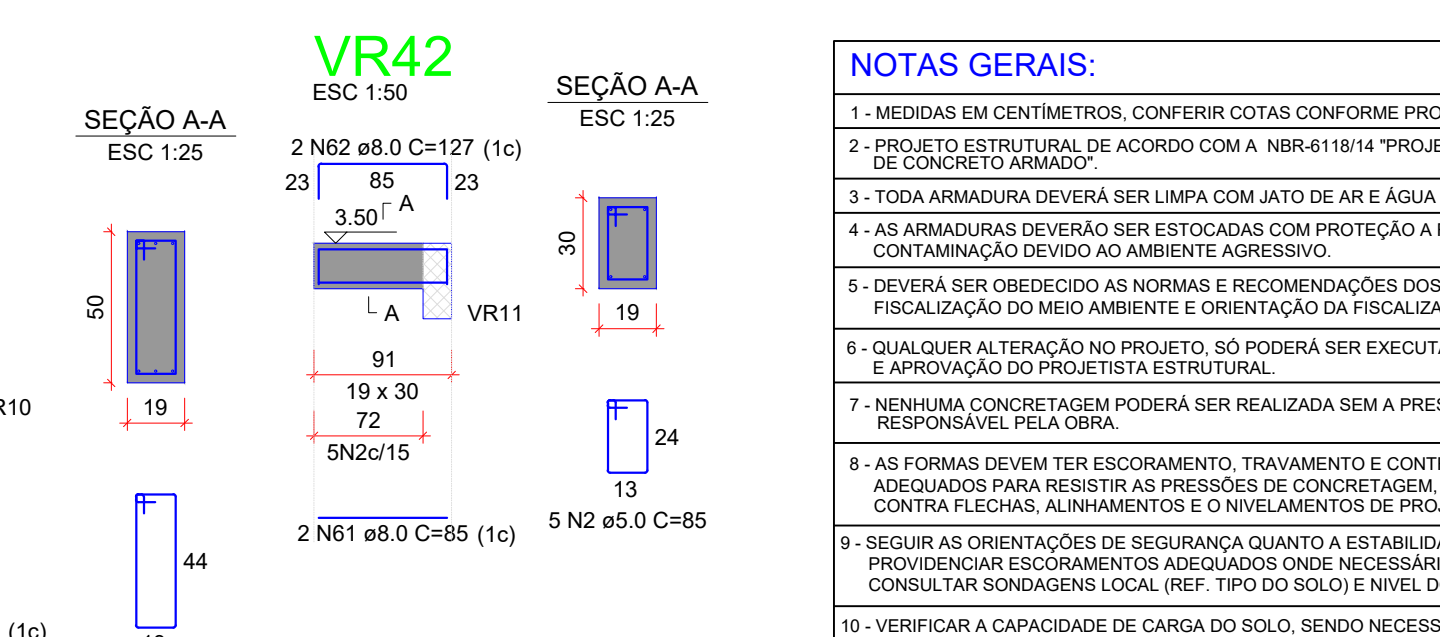
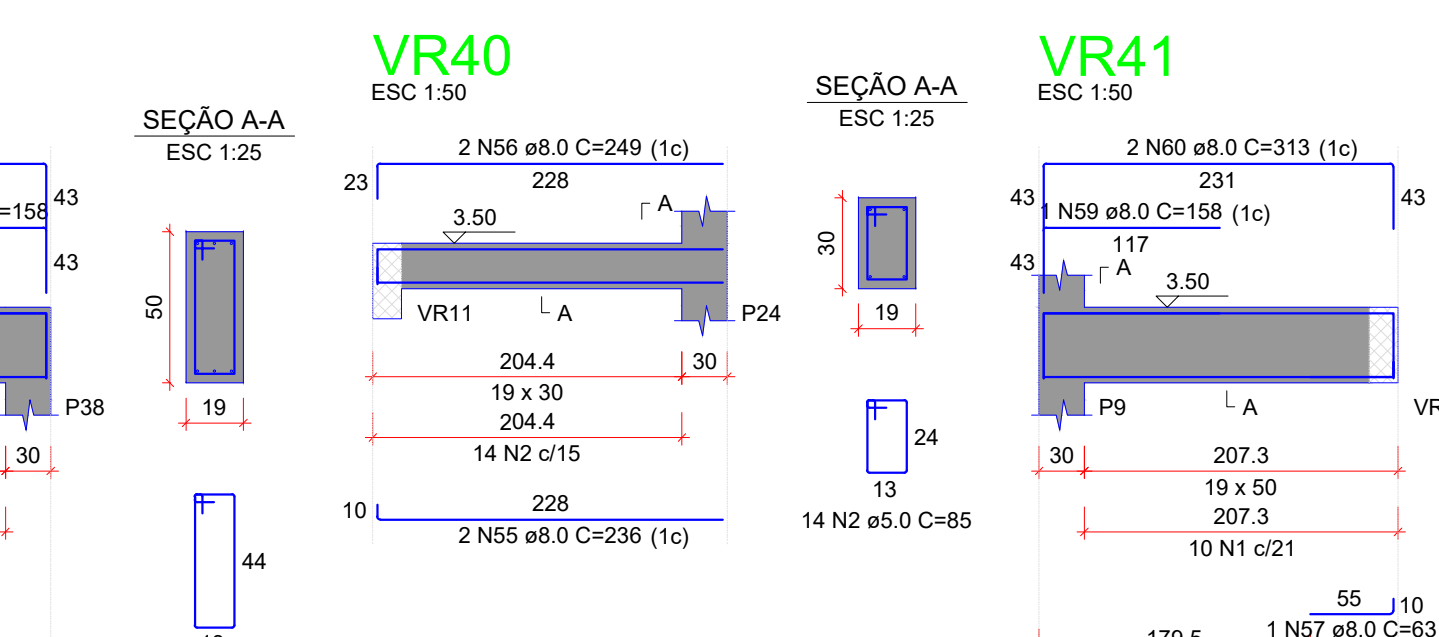
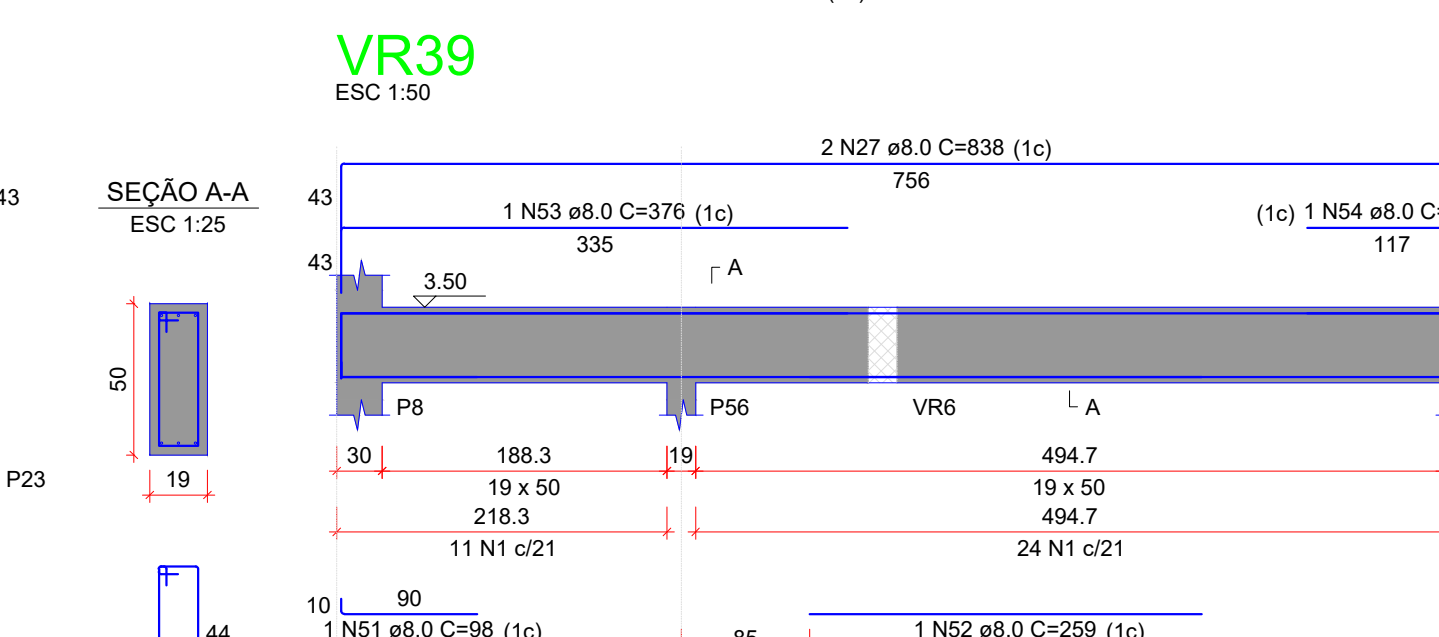
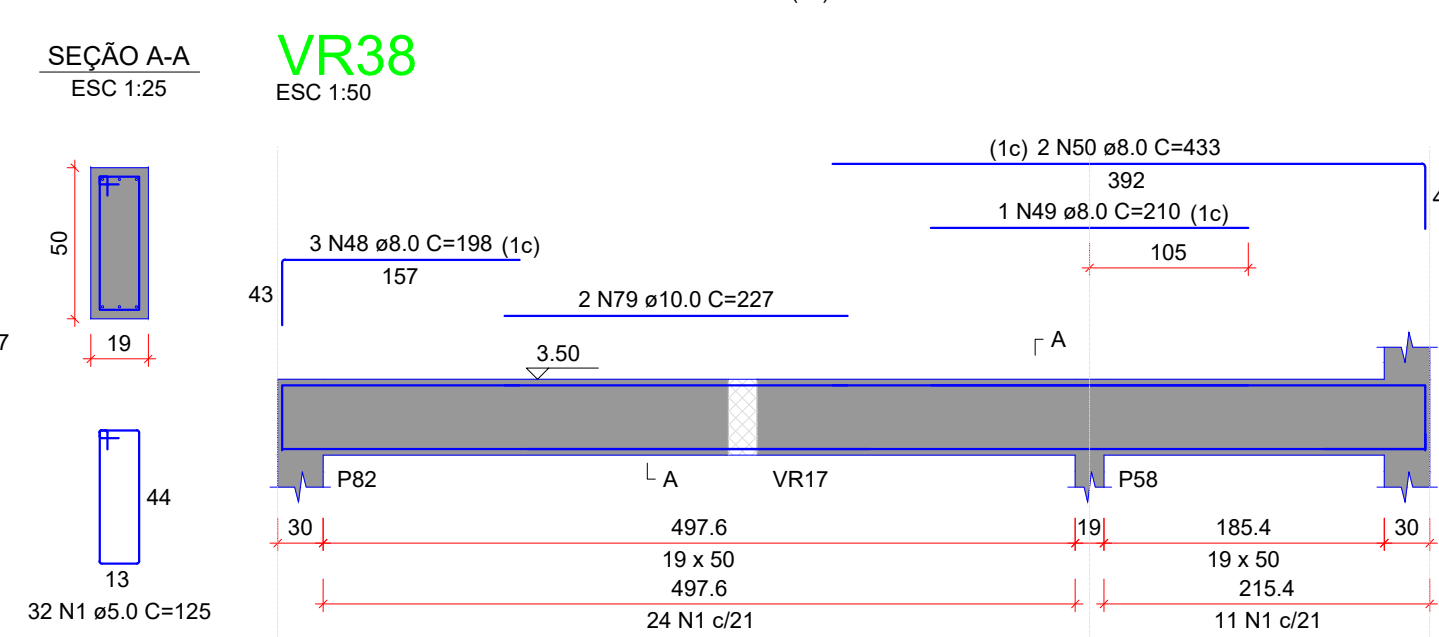
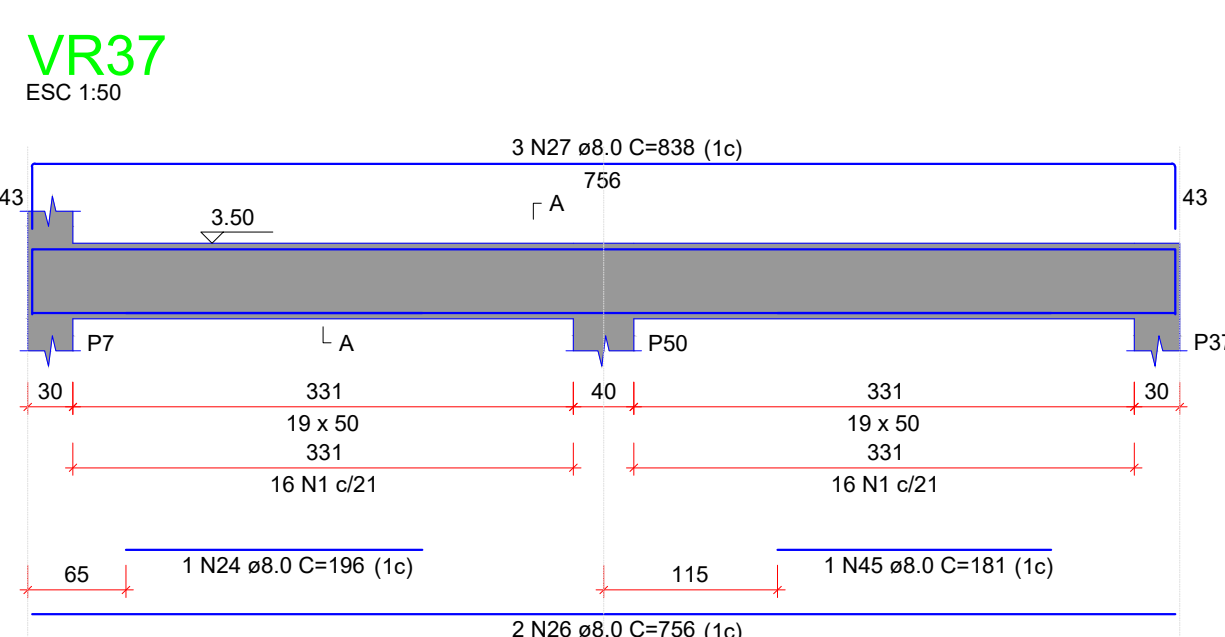
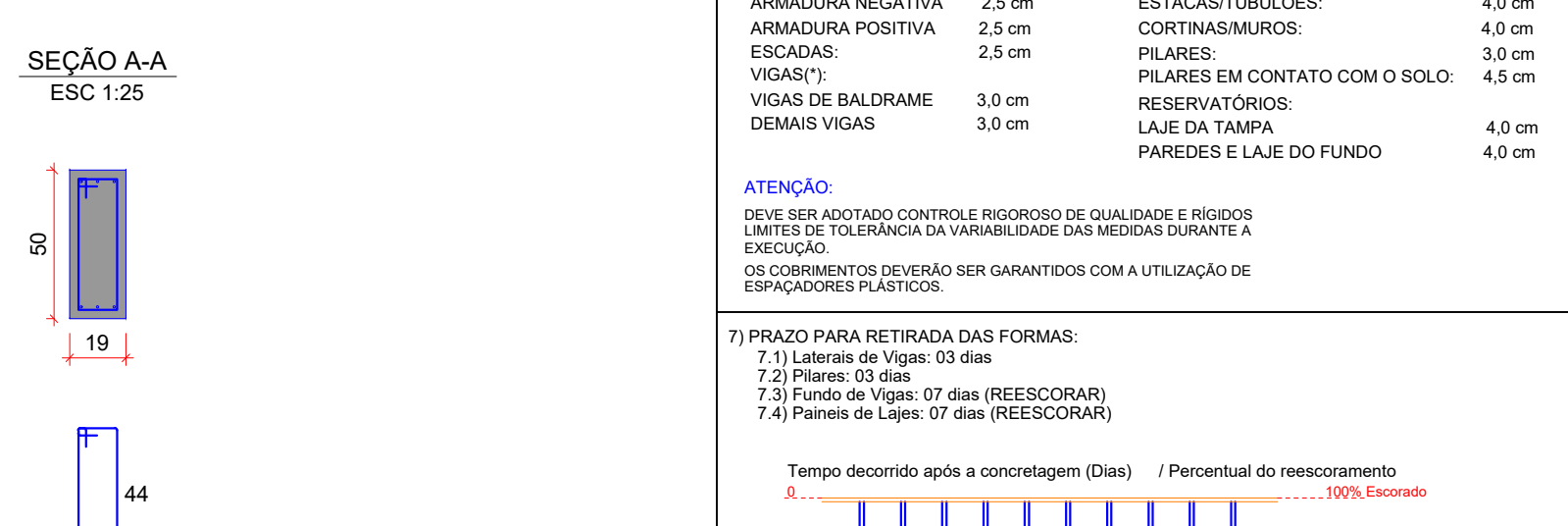
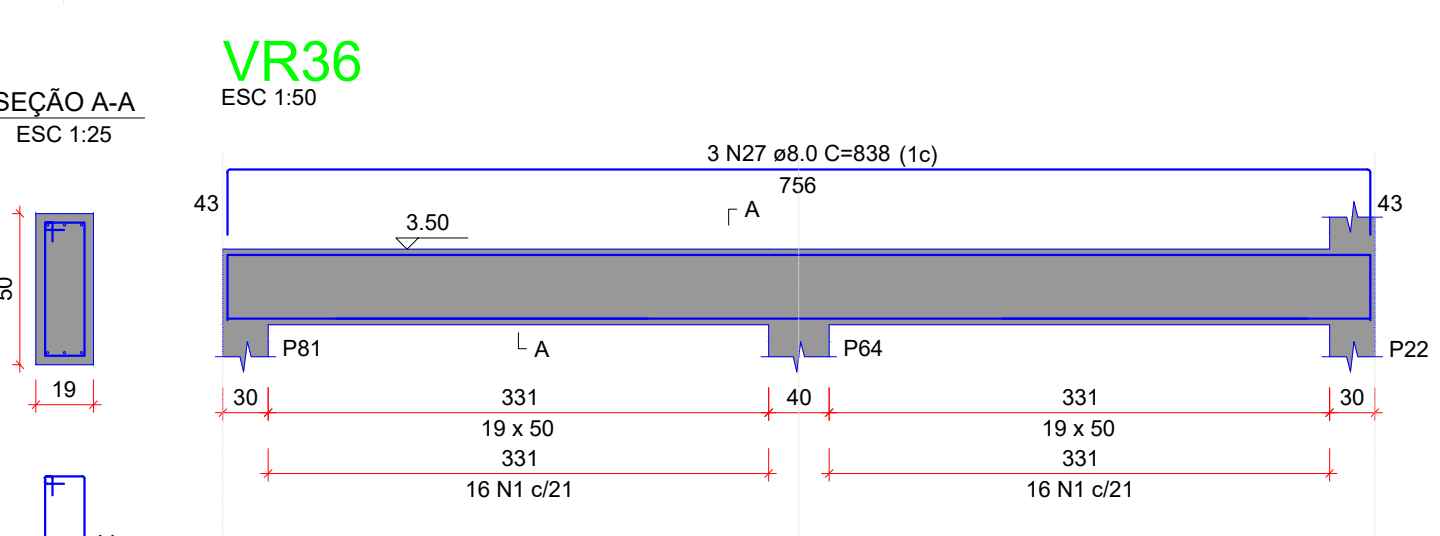
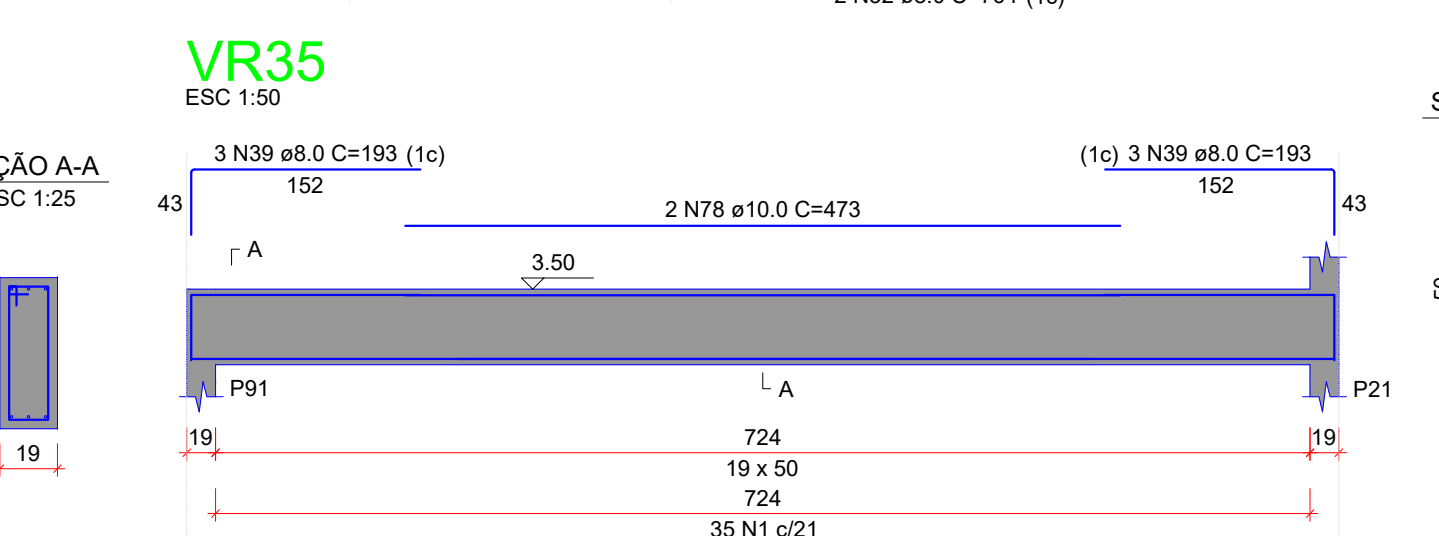
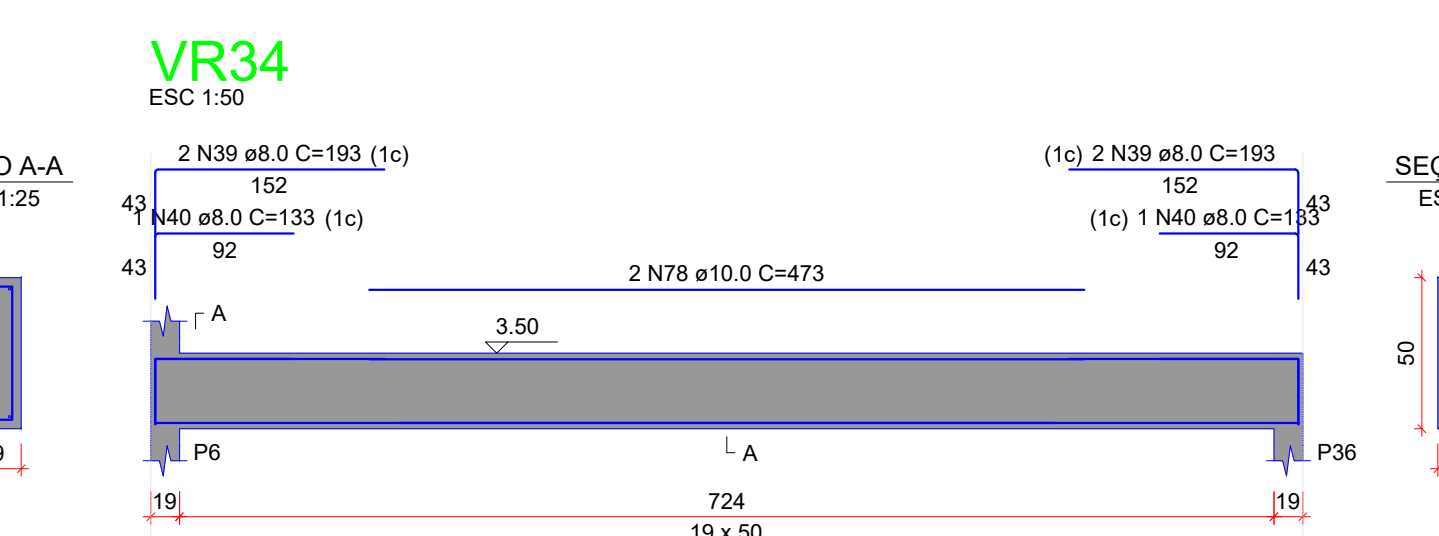
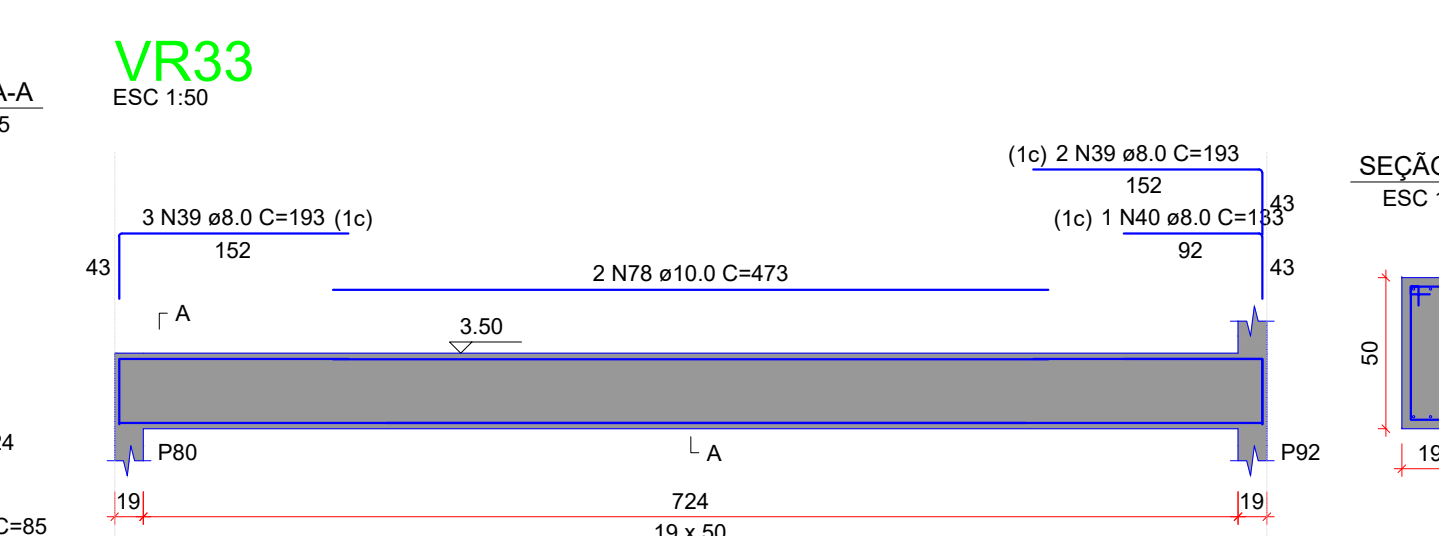
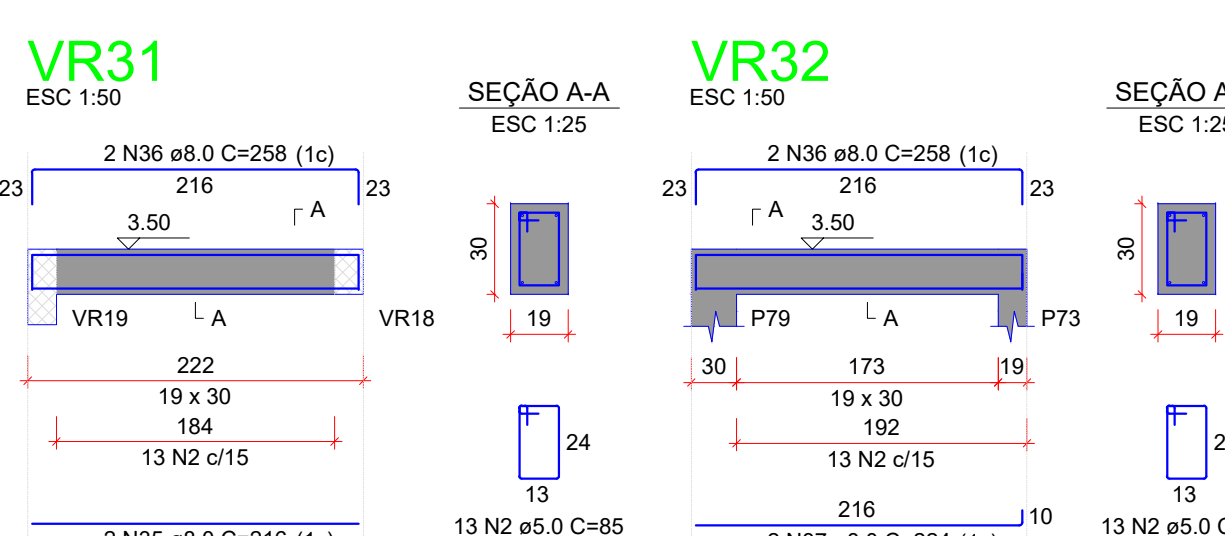
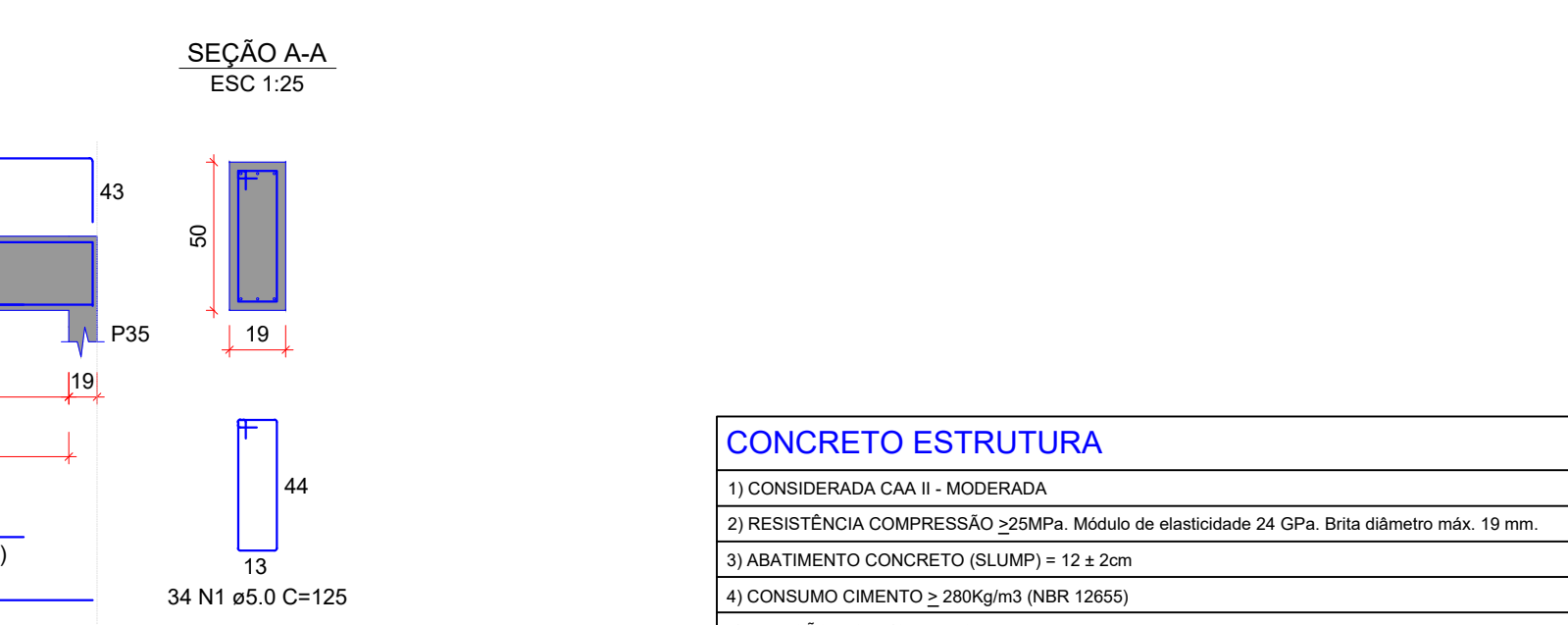
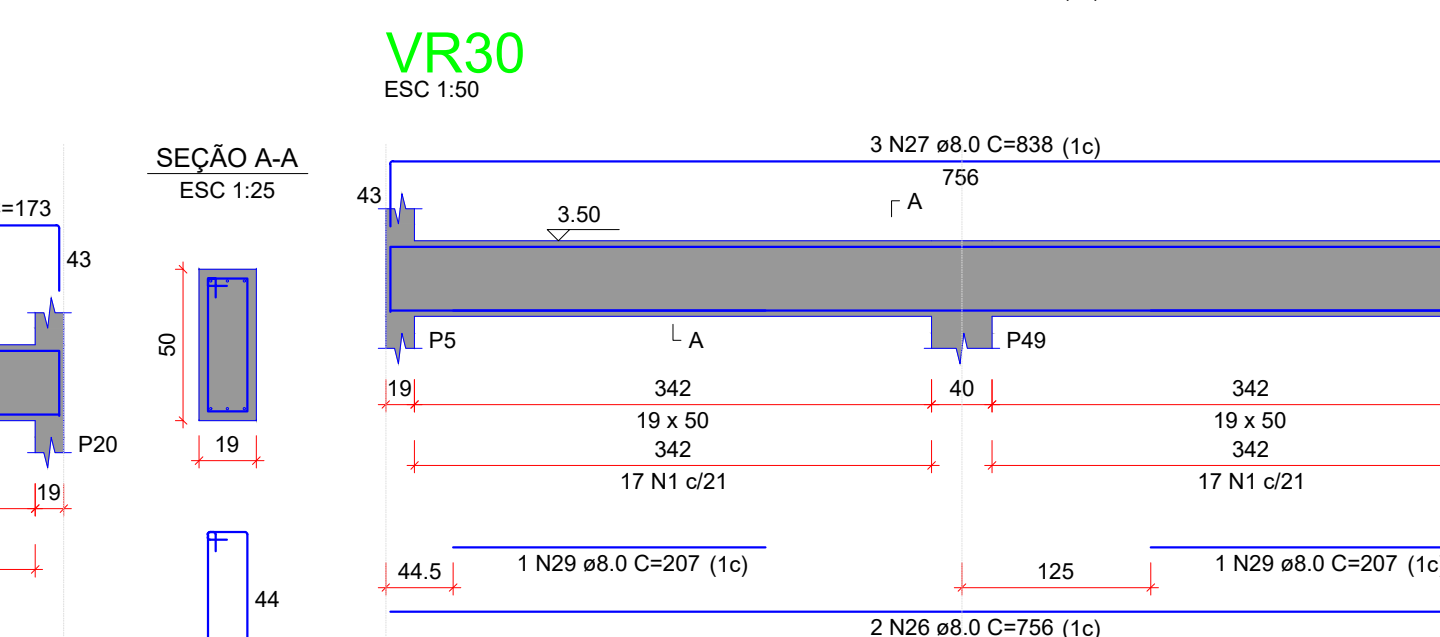
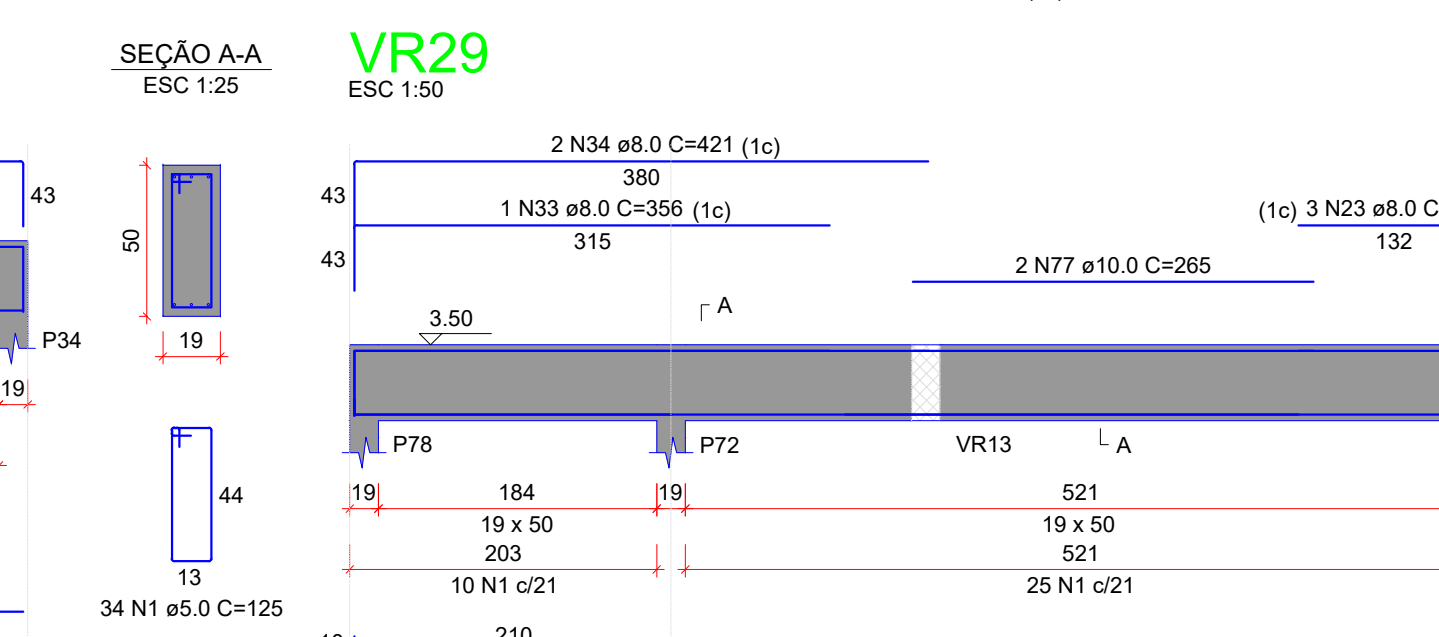
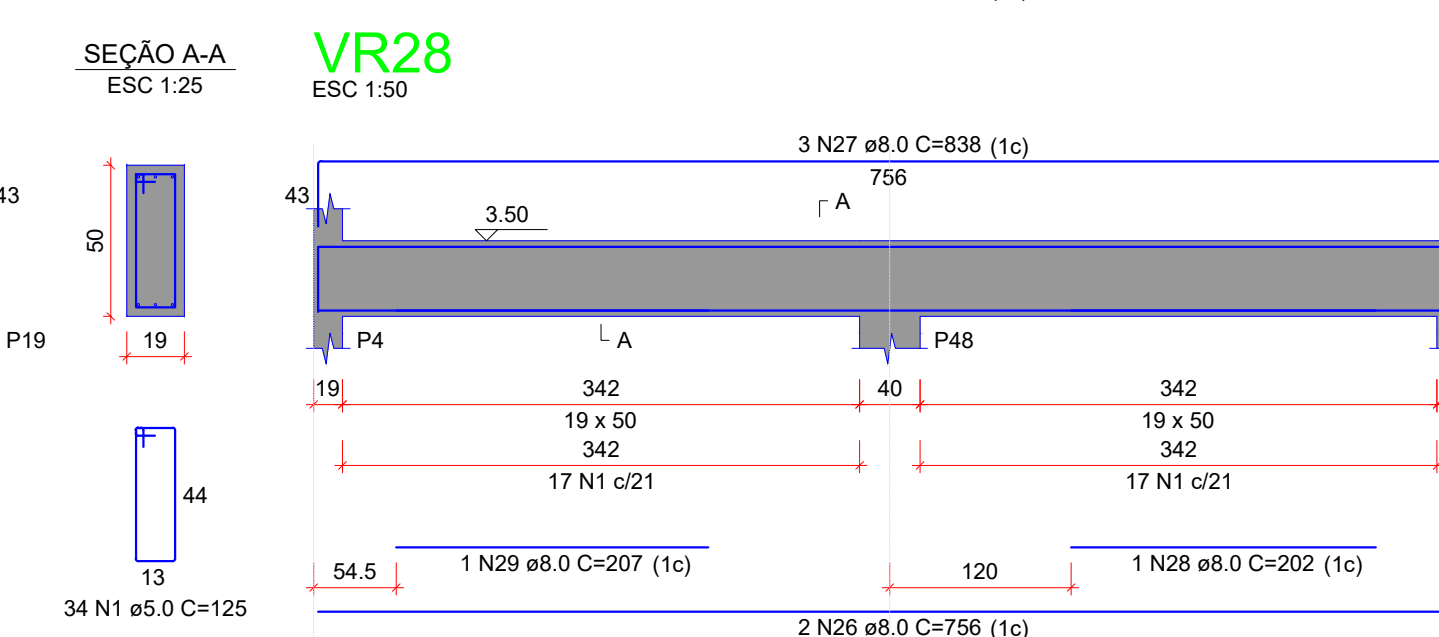
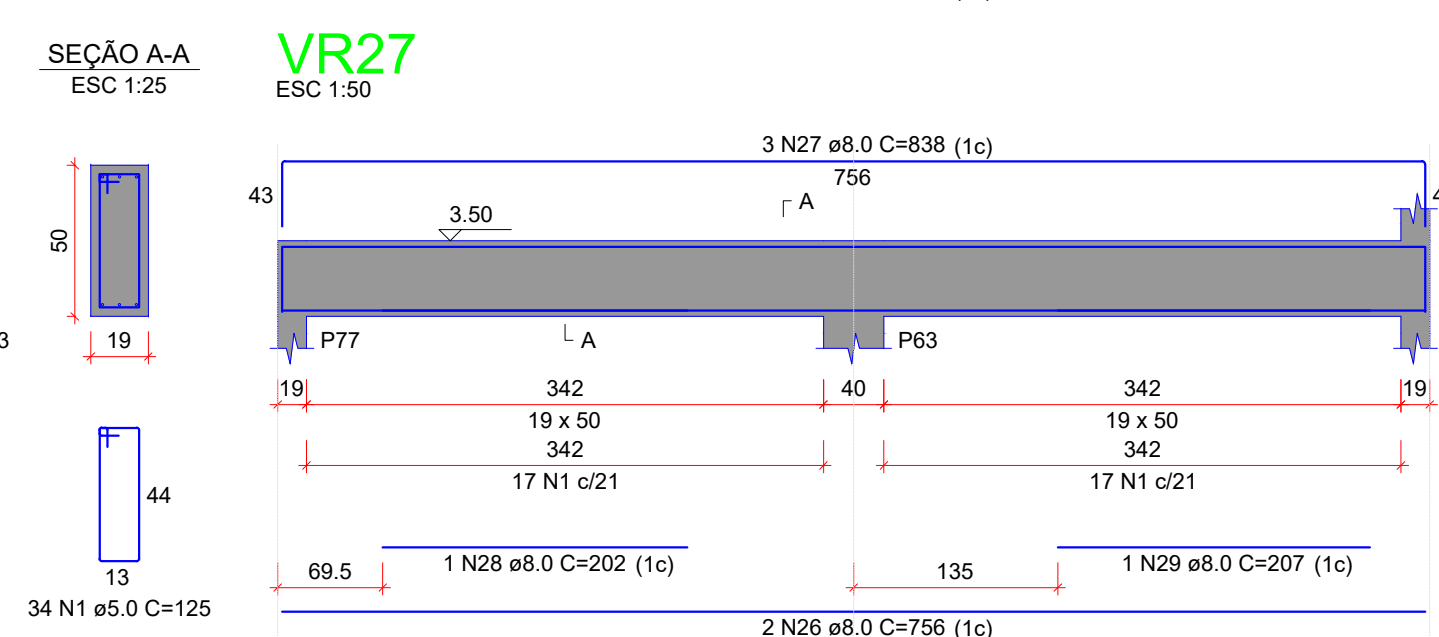
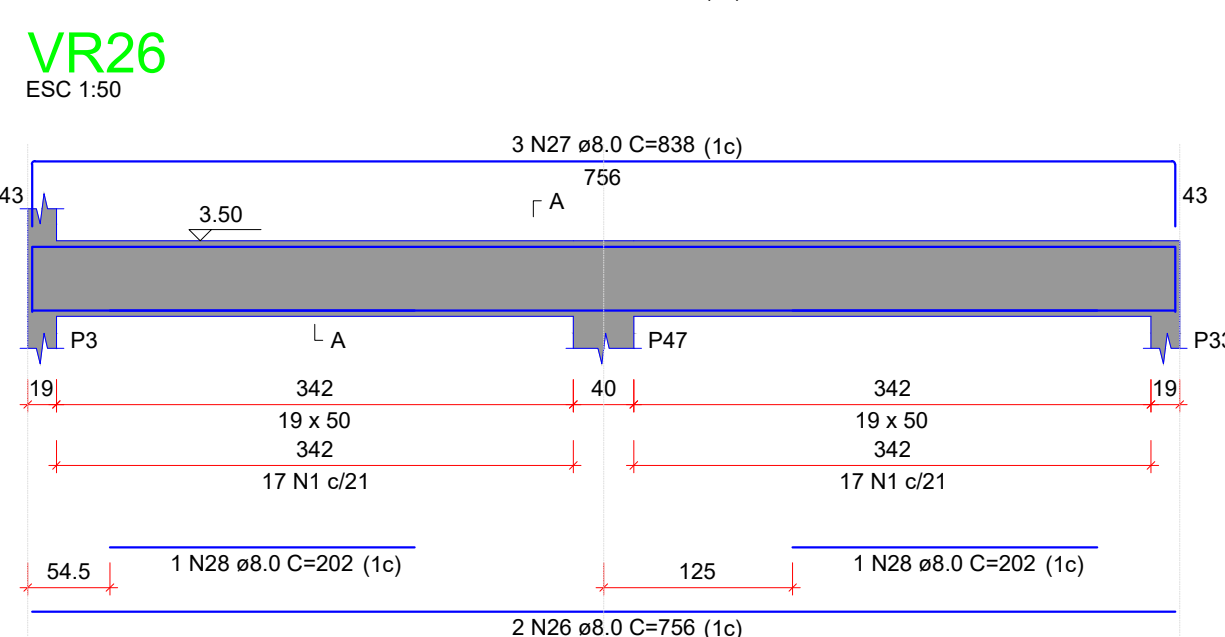
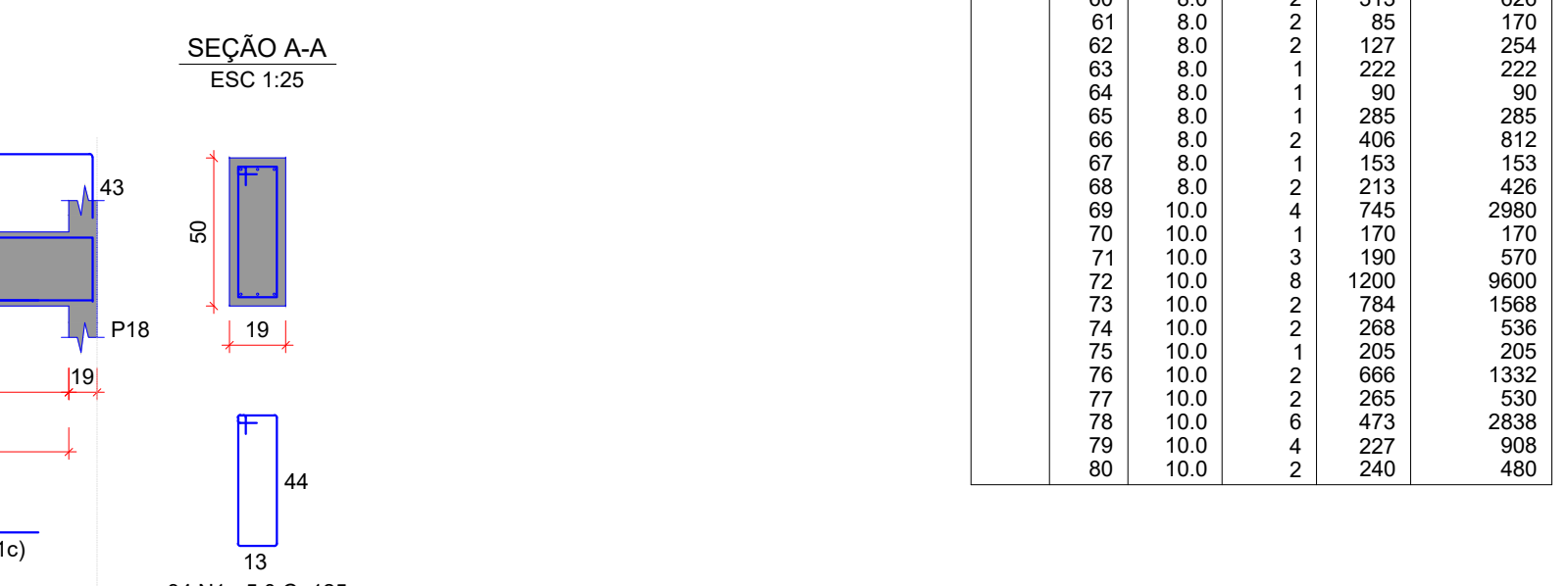
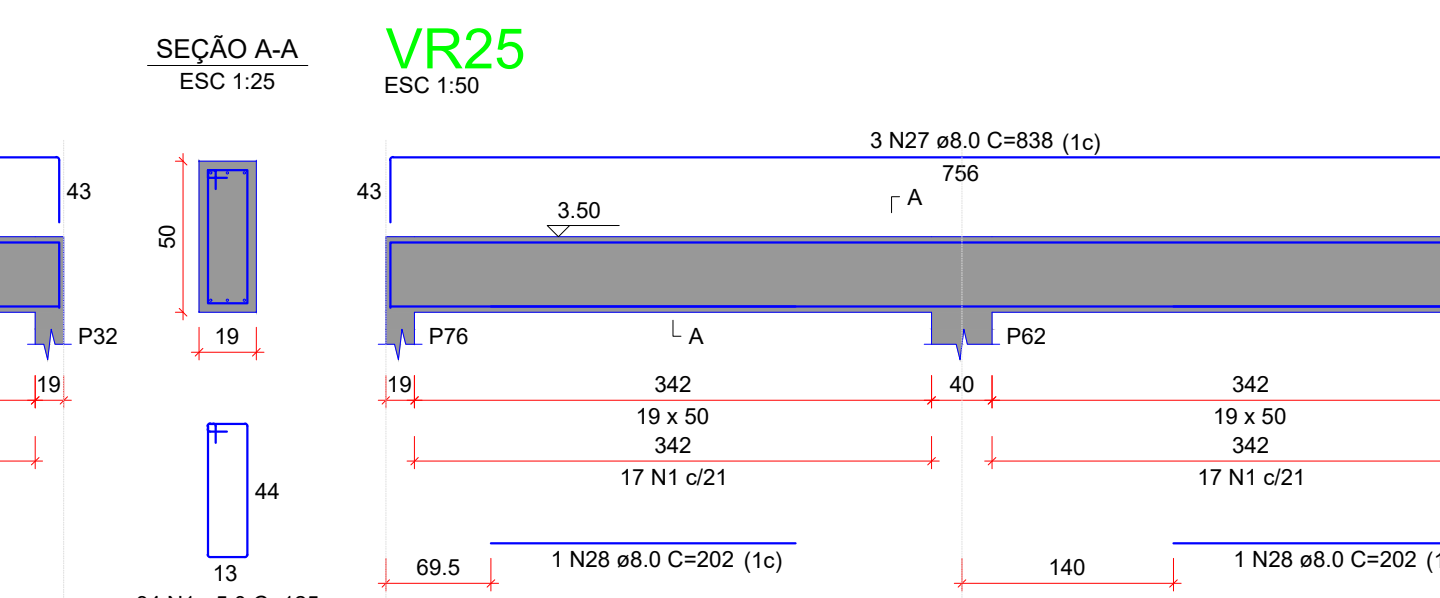
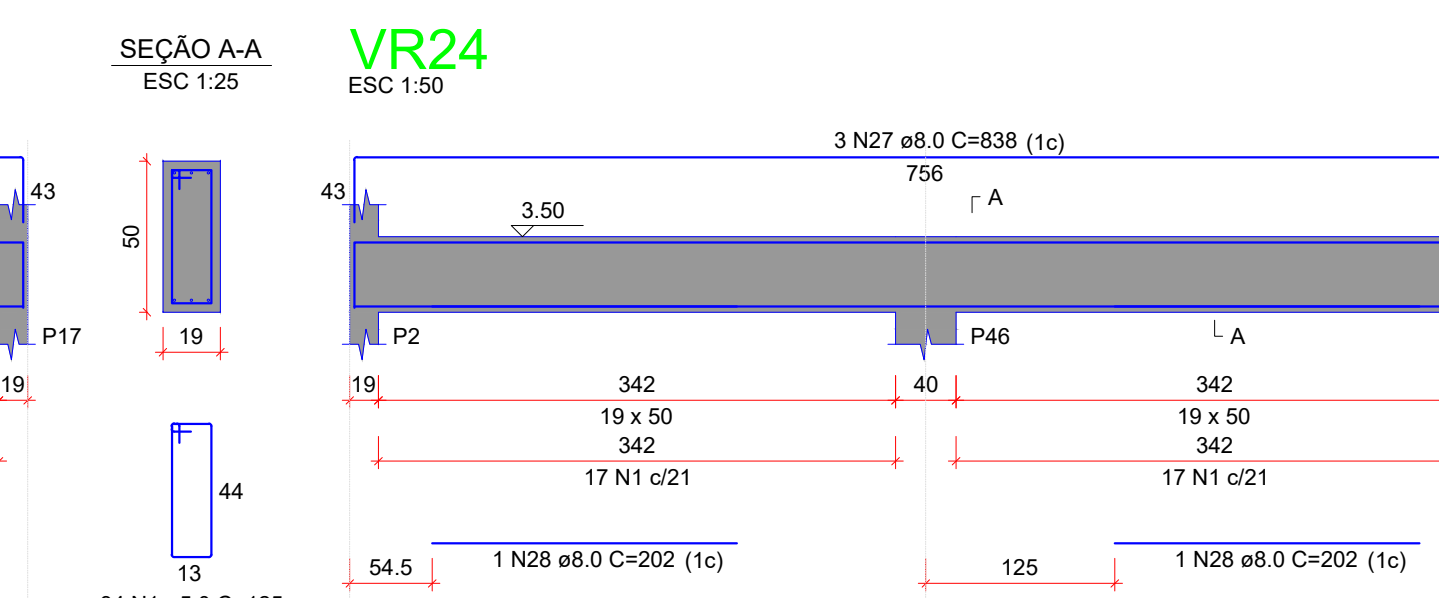
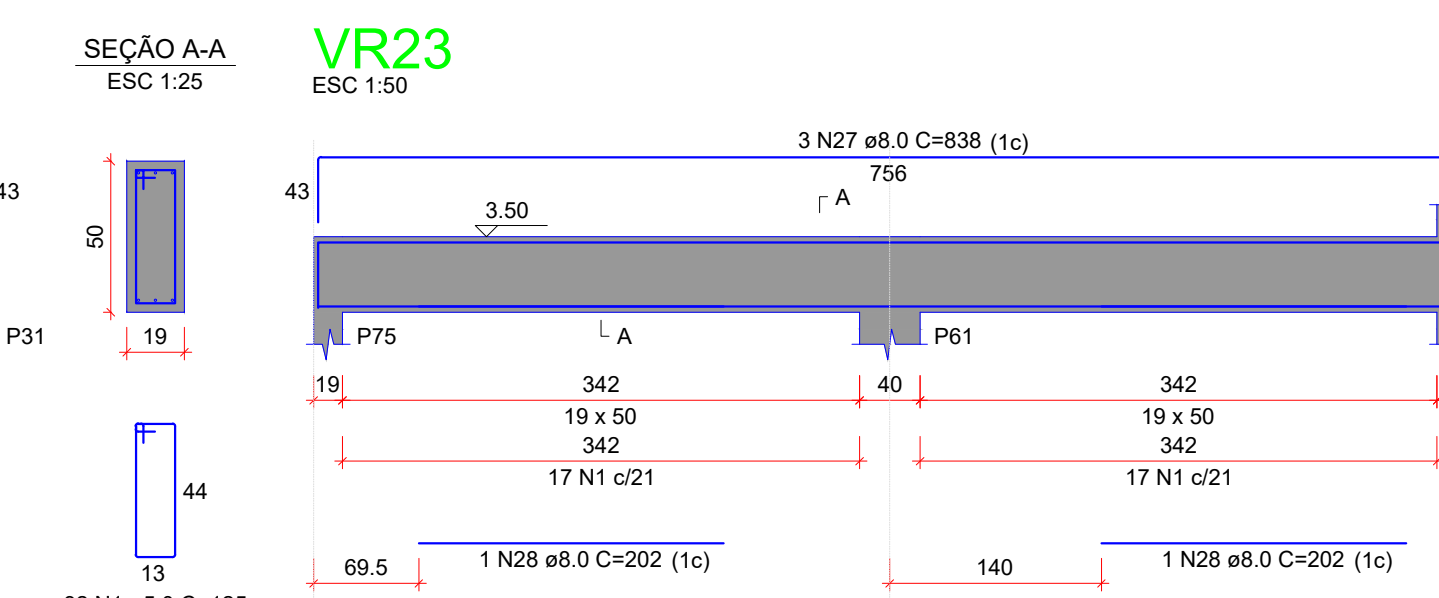
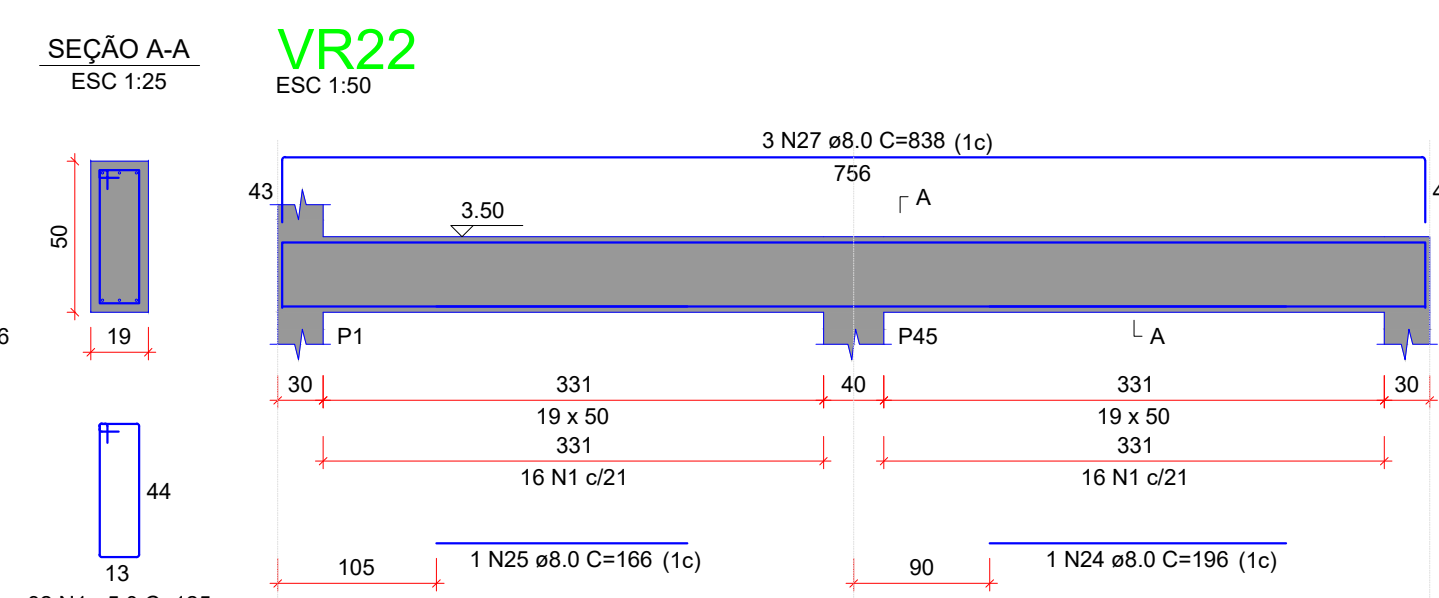
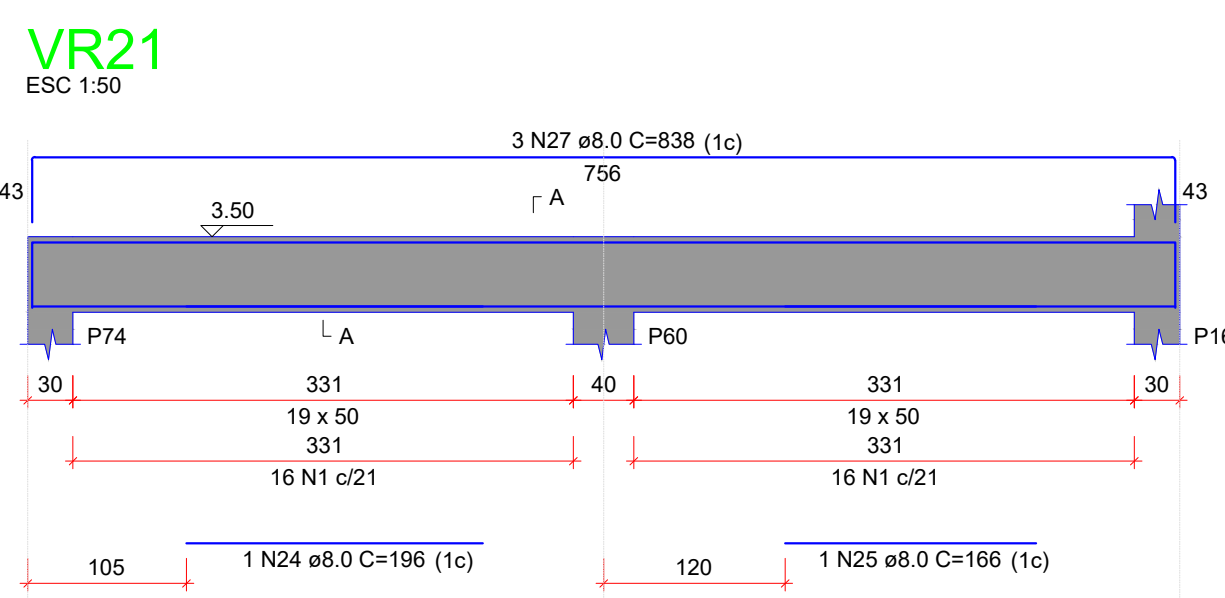
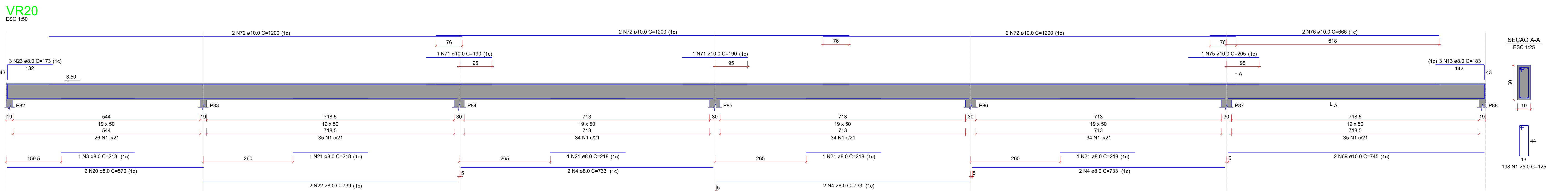


## VR19



- 3. **CONSIDERAÇÕES DO PROJETO:**
  - 1. Nota sobre topografia  
Todos os níveis e eixos apresentados nos projetos deverão ser confirmados "N Loço" em nível e eixo pela obra. Usaremos problemas eventualmente decorrentes da fase de execução para reafirmar o alinhamento das propriedades estruturais de equipe dos projetos SAPEI/SECUD-MT, para que, juntamente com as obras a serem executadas, possam ser corrigidos, quando possível, não acarretando, desta forma, prejuízo para ambas as partes.
  - 2. Responsabilidade pelo planejamento detalhado  
O planejamento detalhado será elaborado somente por completo quando responsável destas prestações.
  - 3. Os projetos estruturais apenas se responsabilizam pelas atividades técnicas das estruturas, não cobrindo nem respectivamente as MT, nem as atividades responsáveis, por quaisquer serviços de planejamento de obra, execução, logística etc., que podem aparecer nas fases da obra.
- 4. Demais contratos ou reformas apartadas após a emissão das ART's dos projetos estruturais, não são de responsabilidade do profissional titular deste projeto. Todos os custos decorrentes de tais contratos sob o nome descritivo, nos projetos estruturais, levantamentos quantitativos e nas ART's, serão considerados, conforme entendimento firmado pela coordenação de projeto e superintendência da SAPEI/SECUD - MT.

RELAÇÃO DO AÇO						
AÇO	N	DIAM	QUANT	CLUNT	C. TOTAL	
VR19	VR20	VR21				
VR25	VR26	VR27				
VR28	VR29	VR30				
VR31	VR32	VR33				
VR36	VR37	VR38				
VR37	VR38	VR39				
VR41	VR42	VR43				
VR43	VR44	VR45				
VR47	VR48	VR49				
VR51	VR52	VR53				
CA60	2	5,0	1296	45	85	3825
CA50	2	5,0	45	85	3825	
	4	10	733	733	7330	
	4	10	733	733	7330	
	6	8,0	1	363	303	
	6	8,0	1	363	303	
	8	8,0	2	1105	2210	
	8	8,0	2	1105	2210	
	10	10	1	238	238	
	10	10	23	237	533	
	12	8,0	2	1129	2258	
	12	8,0	2	1129	2258	
	14	8,0	1	175	175	
	14	8,0	1	175	175	
	16	8,0	1	819	819	
	16	8,0	1	819	819	
	18	8,0	2	1210	2420	
	20	8,0	2	570	1140	
	20	8,0	2	570	1140	
	22	8,0	2	739	1478	
	22	8,0	2	739	1478	
24	8,0	3	196	588		
24	8,0	3	196	588		
26	8,0	42	758	3172		
26	8,0	42	758	3172		
28	8,0	22	202	606		
28	8,0	22	202	606		
30	8,0	1	1242	1242		
30	8,0	1	1242	1242		
31	8,0	300	440			
31	8,0	300	440			
33	8,0	10	765	765		
33	8,0	10	765	765		
35	8,0	356	636			
35	8,0	356	636			
36	8,0	2	219	438		
36	8,0	2	219	438		
37	8,0	2	224	448		
37	8,0	2	224	448		
39	8,0	15	163	2895		
39	8,0	15	163	2895		
41	8,0	1	433	433		
41	8,0	1	433	433		
43	8,0	1	206	206		
43	8,0	1	206	206		
45	8,0	1	181	181		
45	8,0	1	181	181		
47	8,0	1	75	75		
47	8,0	1	75	75		
49	8,0	2	210	420		
49	8,0	2	210	420		
51	8,0	2	98	196		
51	8,0	2	98	196		
53	8,0	2	376	752		
53	8,0	2	376	752		
55	8,0	2	236	472		
55	8,0	2	236	472		
57	8,0	1	63	63		
57	8,0	1	63	63		
59	8,0	1	158	158		
59	8,0	1	158	158		
61	8,0	2	87	174		
61	8,0	2	87	174		
63	8,0	1	222	222		
63	8,0	1	222	222		
65	8,0	1	285	285		
65	8,0	1	285	285		
67	8,0	1	153	153		
67	8,0	1	153	153		
69	10,0	4	745	2980		
69	10,0	4	745	2980		
71	10,0	3	900	570		
71	10,0	3	900	570		
73	10,0	2	784	1568		
73	10,0	2	784	1568		
75	10,0	1	205	205		
75	10,0	1	205	205		
77	10,0	1	1332	1332		
77	10,0	1	1332	1332		
79	10,0	2	285	530		
79	10,0	2	285	530		
81	10,0	4	227	908		
81	10,0	4	227	908		

[illegible][illegible]